

SUMMIT™ SERIES



SUMMIT BY STRONG SPAS

Experience the full-featured, versatile Summit Series from Strong Spas. An updated, sleek aesthetic pairs well with our tried-and-true Summit interiors and engineering to cover a wide range of customer demands. With built-in ULTRASTRONG® cover lift technology and our exclusive, patented DURA-SHIELD® HardCover, we've dismantled spa cover struggles to further enhance the stress-reducing benefits of your spa investment.



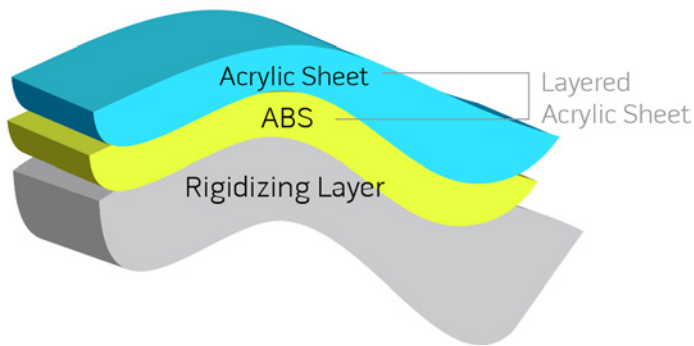
SUMMIT SERIES

Sophisticated curb appeal with luxurious features designed to meet your every hydrotherapy desire mark the Strong Spas Summit Line. We've thought of every detail, from standard galvanized steel frame with integrated dual-walled DURA-BASE®, StrongTouch full-color touchscreen controls and DURA-SHIELD HardCover, to optional, innovative WIFI connectivity.

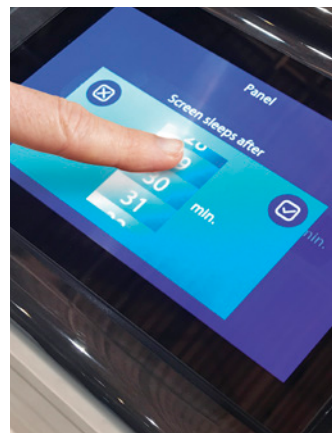


STRONG SPAS' PATENTED
DURA-SHIELD® HARDCOVER
with ULTRA-STRONG® COVERLIFT SYSTEMS

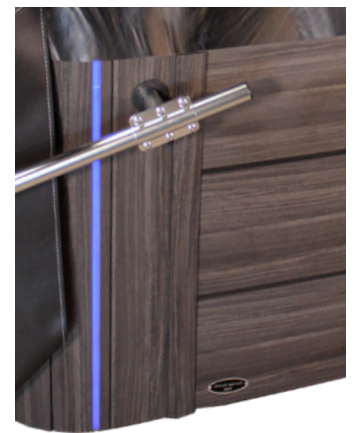
STRONG-BOND® SPA SHELLS



- One of the industry's strongest and thickest triple-layered shell designs
- Co-extruded ABS laminate allows for better color consistency and dramatic reduction in delamination
- No roll-out air pocket issues
- Sag resistant
- Exothermal adhesion of rigidizing layer
- Styrene-Free! Environmentally-friendly process vs fiberglass which emits toxic VOCs



STRONGTOUCH™
TOUCHSCREEN



CONTEMPORARY
VERTICAL ILLUMINATION

UV/O3 SANITATION

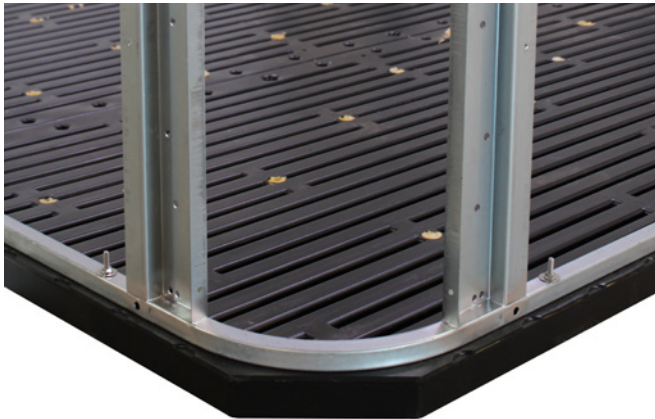
By exposing ozone-infused water to UV, you'll enjoy a better clean that is one million times faster than traditional oxidizers. This all-natural antibacterial spa cleaning method eliminates chemical by-products.



SUMMIT™ SERIES	DE-SL60 / DE-S60	DE-SL50 / DE-S50	DE-SL40 / DE-S40
Spa Body Dimensions WxLxH (inches)	91x91x36	85x85x36	74x74x36
Dry Weight	950 lbs.	900 lbs.	600 lbs.
Filled Weight	4963 lbs.	4244 lbs.	3108 lbs.
Seats	6-7	5-6	5-6
Jets	60 Jets	50 Jets	40 Jets
Seating	Single-Lounger or Non-Lounger	Single-Lounger or Non-Lounger	Single-Lounger or Non-Lounger
Cool-Down Seat	1	1	1
Entry Step	Yes	Yes	Yes
Water Capacity	Approx. 480 USG	Approx. 400 USG	Approx. 300 USG
High-Efficiency Pump 1	5BHP Single-Speed	5BHP Single-Speed	5BHP Single-Speed
High-Efficiency Pump 2	5BHP Single-Speed	5BHP Single-Speed	NA
Circulation Pump	Standard	Standard	Standard
Stainless Steel True Heater	4kW	4kW	4kW
Operating Voltage	240V	240V	240V
STRONGTOUCH™ Full-Color Capacitive Touchscreen	Standard	Standard	Standard
LED Water Column Feature	Triple	Triple	Double
Filtration, Telescopic Floating Weir	50 sq ft	50 sq ft	50 sq ft
Whisper Quiet Sound Insulation	Standard	Standard	Standard
Industrial-Strength Galvanized Steel Frame	Standard	Standard	Standard
DURA-BASE® Foundation	Standard	Standard	Standard
Hardware-Free Cabinets: • Weathered • White Sands • Deep Woods • New Coastal	Standard	Standard	Standard
Strong-Bond Shell in 4 Color Options • Sterling Silver • Tuscan Sun • Storm Clouds • Midnight Canyon	Standard	Standard	Standard
Vertical Illumination Exterior LED Package	Standard	Standard	Standard
Interior LED Package	LED Headrests + Underwater LED + LED Controls + LED Cup Holders + Cabinet LEDs	LED Headrests + Underwater LED + LED Controls + LED Cup Holders + Cabinet LEDs	LED Headrests + Underwater LED + LED Controls + LED Cup Holders + Cabinet LEDs
UV/Ozone Dual Sanitation System	Standard	Standard	Standard
DURA-SHIELD® HardCover (Manual) with Stainless Steel Integrated ULTRA-STRONG™ Cover Lift	Standard	Standard	Standard
Premium Sound System: 4 Transducers + 2 Shell Speakers, Bluetooth-Ready OPTION	Optional	Optional	Optional
WIFI Module OPTION	Optional	Optional	Optional

SUMMIT BY STRONG SPAS

SUMMIT STANDARD FEATURES

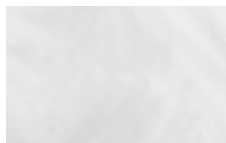


DURA-BASE®
 INDUSTRY'S THICKEST AND STRONGEST BASE INTEGRATED WITH OUR GALVANIZED STEEL FRAME
 Engineered to be superior from the ground up, an industrial-grade galvanized steel frame is integrated into our patented DURA-BASE. Impermeable and pest-resistant, DURA-BASE creates a thermal barrier and provides even load distribution. Only minimal site preparation is required.

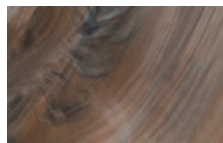


DURA-SHIELD® HardCover
 EXCLUSIVE, PATENTED AND GUARANTEED
 Strong Spas' innovative, patented, integrated cover technology is our legacy and crowning achievement. Robust, stainless steel hardware anchors our DURA-SHIELD® HardCover with integrated ULTRASTRONG® Manual Lifter System. This cover is so easy to open and close it is the solution to all spa cover worries.

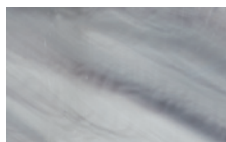
SUMMIT SPA SHELL FINISHES



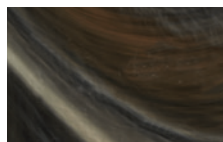
STERLING SILVER



TUSCAN SUN



STORM CLOUDS



MIDNIGHT CANYON

SUMMIT OPTIONAL FEATURES

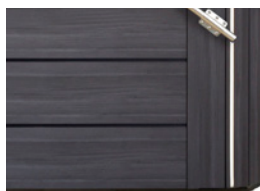


WIFI APP REMOTE CONNECTIVITY

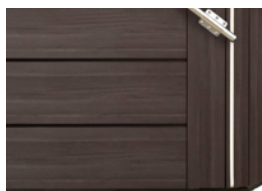


PREMIUM SOUND
 QUAD TRANSDUCER SYSTEM

SUMMIT CABINET FINISHES



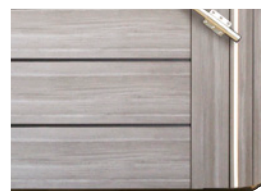
NEW COASTAL



DEEP WOODS



WHITE SANDS



WEATHERED