

# PREMIUM™ SERIES



## PREMIUM SPAS BY STRONG SPAS

The innovation that put Strong Spas on the map. Engineered for strength and thermal efficiency, the Premium line features our patented dual-walled resin DURA-LAST® Cabinet, patented DURA-SHIELD® HardCover and ingenious, integrated foldaway step & towel holder feature. Simply legendary!





Premium Series Models come standard with our patented **DURA-SHIELD® HardCover**.

## PREMIUM SERIES BY STRONG SPAS

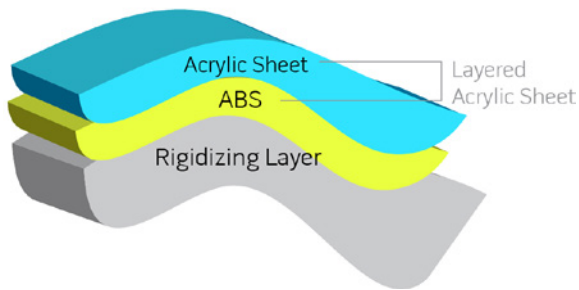
### FEATURING STRONG'S EXCLUSIVE PATENTED DURA-LAST® CABINET SYSTEM WITH A LIFETIME WARRANTY!

A simple repair can be costly when spa components are buried in foam insulation. Imagine a car with the hood welded shut! Strong's acrylic spas afford easy 360° access for routine maintenance by providing energy-efficient perimeter insulation options, including our patented, dual-walled DURA-LAST® cabinet system.

- Insulated dual-walled construction. Proprietary foam insulation is sealed between resin walls, meaning easy access to spa components!
- Pump heat recycled/reused within cabinet air space for energy savings!
- Passed the rigorous California Energy Commission (CEC) Efficiency Test
- Integrated dual-walled DURA-BASE® is up to 10x thicker than standard bases.



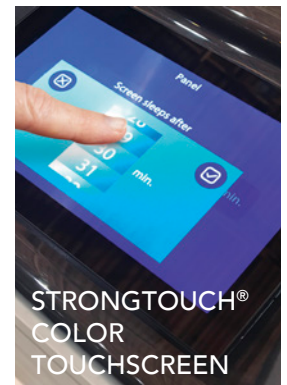
### STRONG-BOND® SPA SHELLS



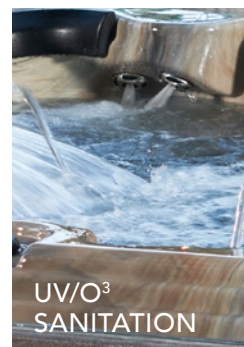
- One of the industry's strongest and thickest triple-layered shell designs
- Co-extruded ABS laminate allows for better color consistency and dramatic reduction in delamination
- No roll-out air pocket issues
- Sag resistant
- Exothermal adhesion of rigidizing layer
- Styrene-Free! Environmentally-friendly process vs fiberglass which emits toxic VOCs



FOLDAWAY, INTEGRATED STEP & TOWEL HOLDER FEATURE



STRONGTOUCH® COLOR TOUCHSCREEN



UV/O<sup>3</sup> SANITATION



ROLLOVER NECK/SHOULDER JETS



PREMIUM™ SERIES	MADRID	VIENNA
Spa Body Dimensions WxLxH (inches)	91x91x36	91x91x36
Dry Weight	950 lbs.	950 lbs.
Filled Weight	4,294 lbs.	4,294 lbs.
Seating	5-6	6-7
Jets	60 Jets	60 Jets
Lounger Seat	1	N/A
Cool-Down Seat	1	1
Entry Step	Yes	Yes
Water Capacity	Approx. 400 USG	Approx. 400 USG
High-Efficiency Pump 1	5BHP Single-Speed	5BHP Single-Speed
High-Efficiency Pump 2	5BHP Single-Speed	5BHP Single-Speed
Circulation Pump	Standard	Standard
Diverter	2	2
Stainless Steel True Heater	4kW	4kW
Operating Voltage	240V	240V
STRONGTOUCH™ Full-Color Capacitive Touchscreen	Standard	Standard
Large, LED Molded Waterfall	Standard	Standard
Double LED Water Feature	Standard	Standard
Jumbo Foot Jet	1	1
Filtration, Telescopic Floating Weir	50 sq ft	50 sq ft
EnergyLok Thermal Insulating System	Standard	Standard
Foldaway Integrated Steps and Towel Holder	Standard	Standard
DURA-LAST® Resin Dual-Walled Cabinet <ul style="list-style-type: none"> <li>• Millstone</li> <li>• Gray Granite</li> <li>• Cobblestone</li> </ul>	Standard	Standard
Strong-Bond Shell in 4 Color Options <ul style="list-style-type: none"> <li>• Sterling Silver</li> <li>• Tuscan Sun</li> <li>• Storm Clouds</li> <li>• Midnight Canyon</li> </ul>	Standard	Standard
DURA-BASE® Foundation	Standard	Standard
Interior LED Package	Underwater LED + LED Controls + Cabinet LEDs	Underwater LED + LED Controls + Cabinet LEDs
UV/Ozone Dual Sanitation System	Standard	Standard
Matching Resin DURA-SHIELD® HardCover (Manual) with Integrated ULTRASTRONG™ Cover Lift	Standard	Standard
Sound System: Bluetooth-Ready, Subwoofer, 2 Shell Speakers <b>OPTION</b>	Optional	Optional
WiFi Module <b>OPTION</b>	Optional	Optional



# PREMIUM SERIES BY STRONG SPAS

## PREMIUM STANDARD FEATURE: DURA-SHIELD® HARDCOVER



### DURA-SHIELD® HARDCOVER

#### Simple. Quick. Easy.

- Built-in ULTRASTRONG® CoverLift system
- Patented DURA-SHIELD Hardcover is as easy to open as a car door

#### Limited Lifetime Warranty

- Pre-installed
- Supports 1000+ lbs. of snowload or debris
- Enjoy convenience every day and money savings over time in never having to replace the cover

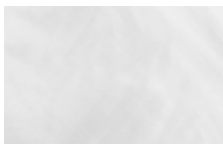
#### Safety

- Lockable
- Easy for an adult to open, yet deters unwanted child entry

#### Energy Efficient

- Proprietary foam insulation is encapsulated within the dual-walled DURA-SHIELD HardCover
- Keeps your spa hot and ready to use without wasting energy
- Maintains its same R-value for many years

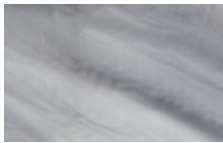
## PREMIUM SPA SHELL FINISHES



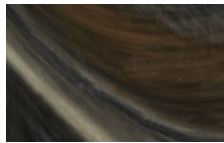
STERLING SILVER



TUSCAN SUN



STORM CLOUDS



MIDNIGHT CANYON

## PREMIUM CABINET COLORS



COBBLESTONE



MILLSTONE



GRAY GRANITE

## PREMIUM OPTIONAL FEATURES



WIFI APP REMOTE CONNECTIVITY



BLUETOOTH SOUND SYSTEM

