

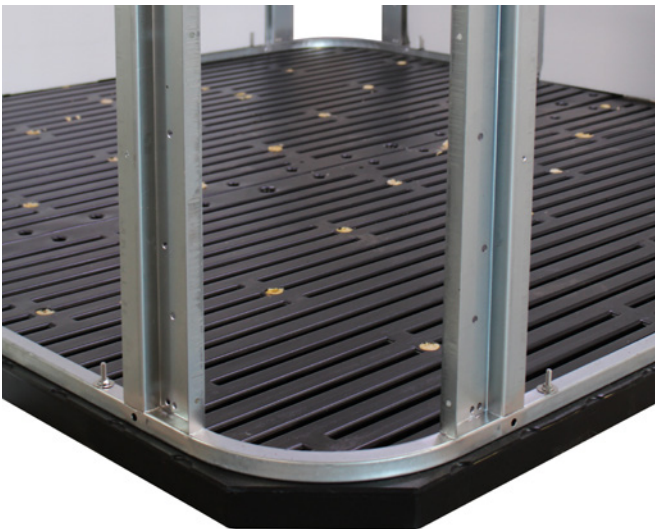
iconic® spas



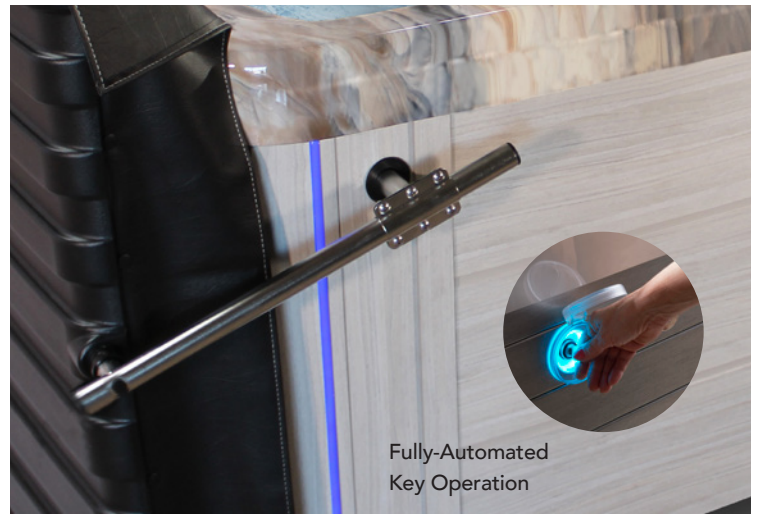
ICONIC SPAS BY STRONG SPAS

Dive into a world of unparalleled luxury and immerse yourself in the new Iconic Series. These spas set themselves apart from the crowd of ordinary spas in the market. Designed to elevate your experience, the Iconic Series embodies a fusion of exquisite craftsmanship, a modern aesthetic, cutting-edge features, and an unmatched commitment to excellence. With built-in fully-automated ULTRA STRONG® cover lift technology and our exclusive, patented DURA-SHIELD® HardCover, we've dismantled spa cover struggles to further enhance the stress-reducing benefits of your spa investment.





DURA-BASE®
 INDUSTRY'S THICKEST AND STRONGEST BASE INTEGRATED WITH OUR GALVANIZED STEEL FRAME
 Engineered to be superior from the ground up, an industrial-grade galvanized steel frame is integrated into our patented DURA-BASE. Impermeable and pest-resistant, DURA-BASE creates a thermal barrier and provides even load distribution. Only minimal site preparation is required.



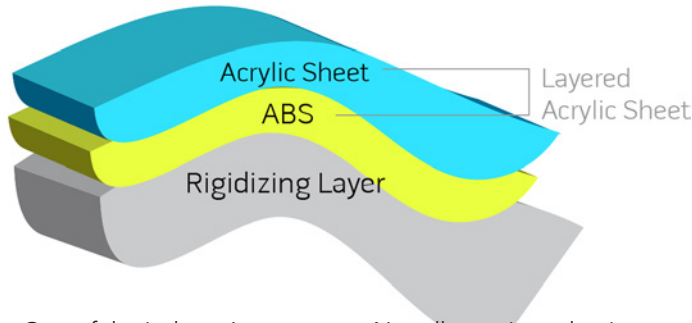
Fully-Automated
 Key Operation

Fully-Automated DURA-SHIELD® HardCover
 EXCLUSIVE, PATENTED AND GUARANTEED
 Strong Spas' innovative, patented, integrated cover technology is our legacy and crowning achievement. Automotive-partnership seals and robust, stainless steel hardware anchor our DURA-SHIELD® HardCover with integrated ULTRASTRONG® Fully-Automated Lifter System. This cover is so easy to open and close it is the solution to all spa cover worries.



ICONIC® SERIES	91L	91NL	85L	85NL
Spa Body Dimensions WxLxH (inches)	91x91x36	91x91x36	85x85x36	85x85x36
Dry Weight	763 lbs.	767 lbs.	710 lbs.	715 lbs.
Filled Weight	4250 lbs.	4025 lbs.	3525 lbs.	3460 lbs.
Seating	6	6	5	6
Maximum Jets available	75 Jets	75 Jets	65 Jets	65 Jets
Lounger Seat	1	N/A	1	N/A
Cool-Down Seat	1	1	1	1
Entry Step	1	1	1	1
Water Capacity	Approx. 418 USG	Approx. 390 USG	Approx. 337 USG	Approx. 331 USG
High-Efficiency Energy-Saver Pump	212GPM / Dual-Speed 56 Frame / 5.0BHP	212GPM / Dual-Speed 56 Frame / 5.0BHP	212GPM / Dual-Speed 56 Frame / 5.0BHP	212GPM / Dual-Speed 56 Frame / 5.0BHP
High-Output Secondary Pump	212GPM / Single-Speed 56 Frame / 5.0BHP	212GPM / Single-Speed 56 Frame / 5.0BHP	212GPM / Single-Speed 56 Frame / 5.0BHP	212GPM / Single-Speed 56 Frame / 5.0BHP
Diverter	2	2	2	2
Stainless Steel True Heater	4kW	4kW	4kW	4kW
Operating Voltage	240V	240V	240V	240V
STRONGTOUCH™ Full-Color Capacitive Touchscreen	Standard	Standard	Standard	Standard
Triple LED Water Feature	Standard	Standard	Standard	Standard
Whirlpool Jet	1	1	1	1
Filtration, Telescopic Floating Weir	50 sq ft	50 sq ft	50 sq ft	50 sq ft
EnergyLok Thermal Insulating System	Standard	Standard	Standard	Standard
Industrial-Strength Galvanized Steel Frame	Standard	Standard	Standard	Standard
DURA-BASE® Foundation	Standard	Standard	Standard	Standard
Hardware-Free Cabinets: • Weathered • White Sands • Deep Woods • New Coastal	Standard	Standard	Standard	Standard
Iconic-Bond Shell in 4 Color Options • Sterling Silver • Tuscan Sun • Storm Clouds • Midnight Canyon	Standard	Standard	Standard	Standard
Vertical Illumination Exterior LED Package	Standard	Standard	Standard	Standard
Interior LED Package	Controls + Cup Holders + Underwater LED	Controls + Cup Holders + Underwater LED	Controls + Cup Holders + Underwater LED	Controls + Cup Holders + Underwater LED
Whisper Quiet Sound Insulation	Standard	Standard	Standard	Standard
UV/Ozone Dual Sanitation System	Standard	Standard	Standard	Standard
DURA-SHIELD® HardCover (Fully-Automated) with Stainless Steel Integrated ULTRASTRONG™ Cover Lift	Standard	Standard	Standard	Standard
Premium Sound System: 4 Transducers + 2 Shell Speakers, Bluetooth-Ready	Optional	Optional	Optional	Optional
WIFI Module	Optional	Optional	Optional	Optional

ICONIC-BOND™ SPA SHELLS



- One of the industry's strongest and thickest triple-layered shell designs
- Co-extruded ABS laminate allows for better color consistency and dramatic reduction in delamination
- No roll-out air pocket issues
- Sag resistant
- Exothermal adhesion of rigidizing layer
- Styrene-Free! Environmentally-friendly process vs fiberglass which emits toxic VOCs

UV/O3 SANITATION

By exposing ozone-infused water to UV, you'll enjoy a better clean that is one million times faster than traditional oxidizers. This all-natural antibacterial spa cleaning method eliminates chemical by-products.



STRONGTOUCH™ TOUCHSCREEN



MODERN AESTHETIC VERTICAL ILLUMINATION

LOW-ENERGY PUMP

Pump 1: 212GPM / Dual Speed / 56 Frame / 5.0HP

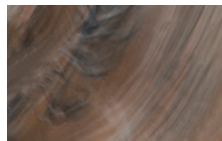
- Energy-Efficient
- Much higher waterflow than circ pump. Eliminates need for circ pump and extra plumbing
- Purges all lines
- Larger windings which extends pump life
- 1.0 Amp draw on low speed vs 4.4 Amp



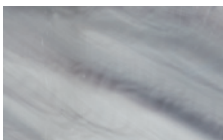
ICONIC SPA SHELL FINISHES



STERLING SILVER



TUSCAN SUN



STORM CLOUDS



MIDNIGHT CANYON

ICONIC OPTIONAL FEATURES

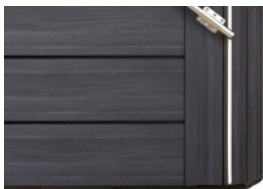


WIFI APP REMOTE CONNECTIVITY

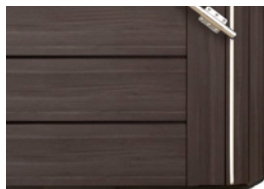


PREMIUM SOUND QUAD TRANSDUCERS SYSTEM

ICONIC CABINET FINISHES



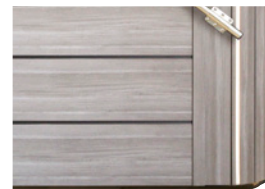
NEW COASTAL



DEEP WOODS



WHITE SANDS



WEATHERED