

EMBARK™ SERIES



EMBARK BY STRONG SPAS

Address your entry-level acrylic spa needs with Strong Spas' Embark Series, available in lounge and non-lounge seating arrangements. Built with a powerful 2-pump system, StrongBond® acrylic shells, stainless steel heater and jets, and an ozone sanitation system these 240V spas prioritize quality and affordability.



EMBARK BY STRONG SPAS



EMBARK™ SERIES	E45L	E45
Spa Body Dimensions WxLxH (inches)	85x85x36	85x85x36
Dry Weight	657 lbs.	657 lbs.
Filled Weight	4050 lbs.	4050 lbs..
Seats	5-6	6-7
Jets	45 Jets	45 Jets
Seating	Lounger	Non-Lounger
Cool-Down Seat	1	1
Entry Step	Yes	Yes
Water Capacity	Approx. 400 USG	Approx. 400 USG
High-Efficiency Pump 1	5BHP Dual-Speed	5BHP Dual-Speed
High-Efficiency Pump 2	5BHP Single-Speed	5BHP Single-Speed
Stainless Steel True Heater	4kW	4kW
Operating Voltage	240V	240V
Filtration, Telescopic Floating Weir	50 sq ft	50 sq ft
Cabinets: • Espresso • Gray	Standard	Standard
Strong-Bond Acrylic Shell: Sterling Silver	Standard	Standard
Lighting	Underwater LED, 6 LED Points	Underwater LED, 6 LED Points
Ozone Sanitation System	Standard	Standard
Heavy-Duty, Tapered, Insulated Vinyl Soft Cover	Standard	Standard
Shell Color Upgrade: • Tuscan Sun • Storm Clouds • Midnight Canyon	Optional	Optional

EMBARK CABINET COLORS

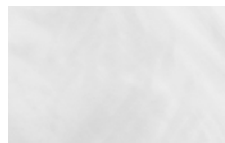


ESPRESSO

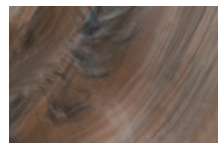


GRAY

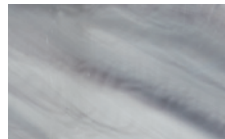
EMBARK SPA SHELL FINISHES



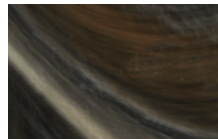
STERLING SILVER
STANDARD



TUSCAN SUN
UPGRADE



STORM CLOUDS
UPGRADE



MIDNIGHT CANYON
UPGRADE

HEAVY-DUTY INSULATED, TAPERED VINYL COVER

